

1. Description



Universal Channel Clamps are heavy-duty mounting brackets designed for securing various fixtures, such as signs, enclosures, and equipment, to poles and other vertical structures of different shapes and sizes. These clamps utilize stainless steel banding (sold separately) to attach firmly to the structure, eliminating the need for drilling. The clamp features a robust channel body with slots for the banding and an integrated bolt or threaded stud for attaching the desired fixture.

2. Key Features

- **Heavy-Duty Mounting:** Provides a strong and stable platform for mounting fixtures onto poles or similar structures.
- **Drill-Free Installation:** Attaches securely using stainless steel banding, avoiding damage to the pole's structural integrity or surface coating.
- **Versatile Application:** Suitable for round, square, or irregular shaped poles; adaptability primarily depends on the length of banding used.
- **Utilizes Standard Banding:** Designed to work with commonly available stainless steel banding and associated clips or buckles.
- **Standardized Fixture Attachment:** Incorporates a standard-sized bolt/stud (e.g., 1/2" or 5/8") allowing for easy mounting of various fixtures.
- **Durable Construction:** Typically manufactured from corrosion-resistant materials like high-strength aluminum or stainless steel.

3. Applications

- Ideal for mounting various items to poles without drilling, including:
- Traffic signs and control devices
- Security cameras, lighting fixtures, and sensors
- Electrical enclosures, junction boxes, and cabinets
- Advertising banners and temporary signage
- Conduit, pipe runs, and utility attachments
- Telecommunication equipment (antennas, small cells)

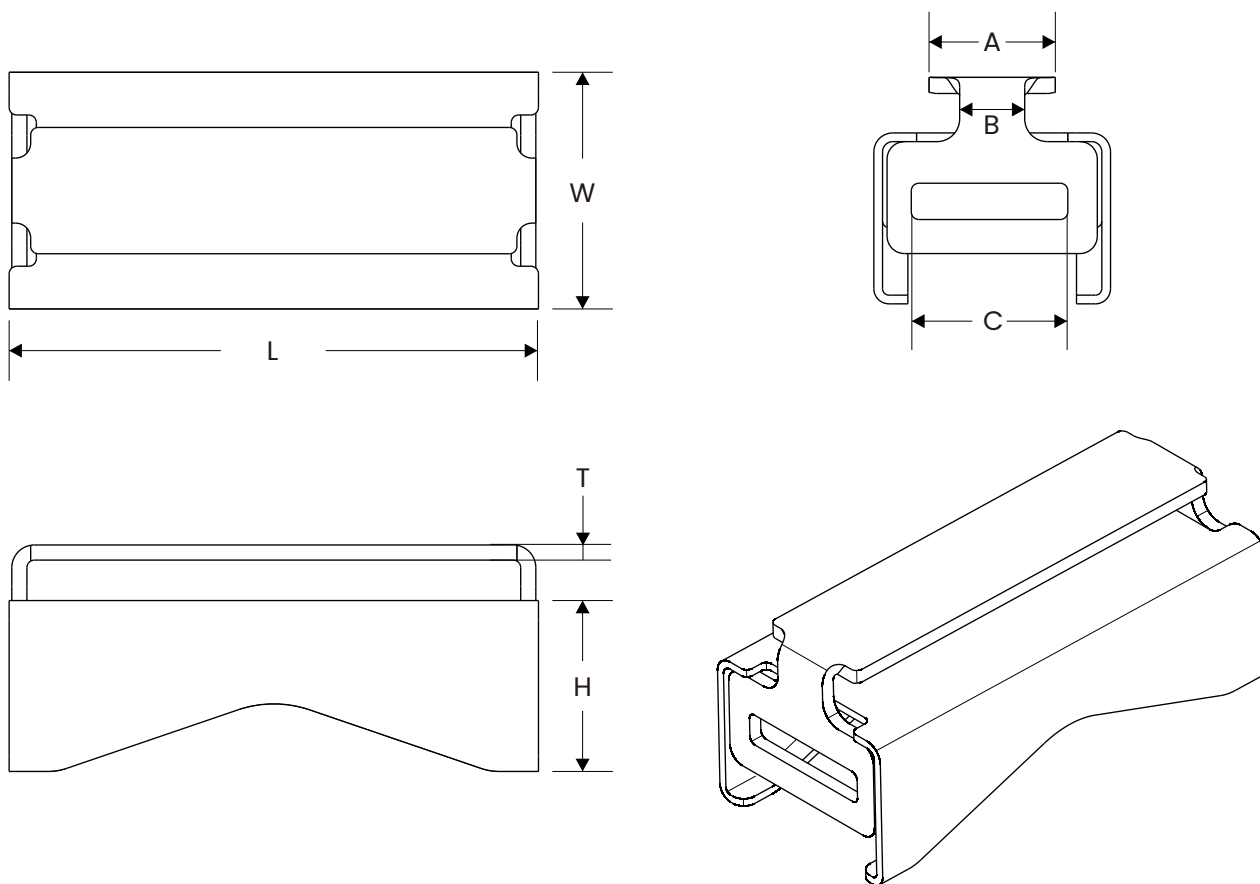
4. Technical Data

- **Material Grade:** Typically Stainless Steel 201 or 304
- **Channel Compatibility:** Fits various sizes of strut channels
- **Pipe/Tube Diameter Range:** No limits
- **Maximum Load Capacity:** Dependent on clamp size and stainless steel banding size
- **Operating Temperature Range:** -50°C to +250°C (approximate, may vary slightly)
- **Corrosion Resistance:** Excellent resistance to atmospheric corrosion, many chemicals, and saltwater (superior with Ss316)
- **Fastening Method:** Typically secured with stainless steel banding straps
- **Material Thickness:** Varies by clamp size and load rating

5. Installation Guidance

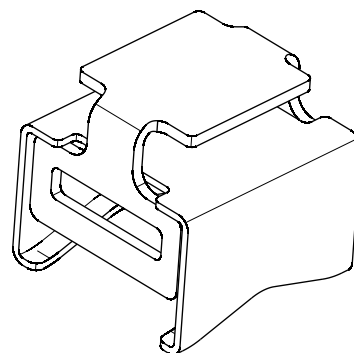
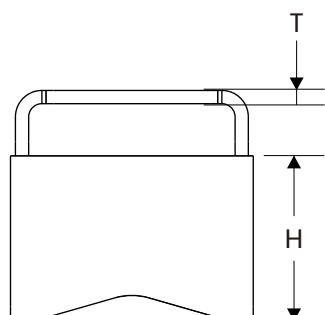
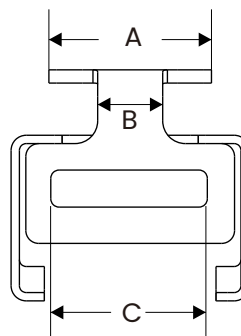
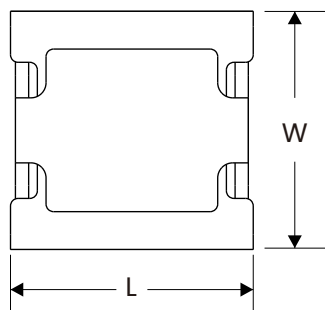
- **Determine Placement:** Identify the desired mounting location on the pole. Use two clamps (one above, one below the fixture's center of gravity) for stability, especially for larger or heavier items.
- **Prepare Banding:** Cut an appropriate length of stainless steel banding, allowing enough length to go around the pole, through the clamp slots, and provide overlap for the chosen buckle/clip.
- **Thread Banding:** Feed the banding through the slots provided in the channel clamp body.
- **Position Clamp:** Place the channel clamp (with banding threaded) against the pole at the desired height. Wrap the banding around the pole.
- **Secure Banding:** Securely fasten the stainless steel banding using the appropriate clips/buckles and tensioning tool, following the installation procedure for that specific fastening method. Ensure the band is adequately tensioned for a firm hold against the pole. Repeat for the second clamp if applicable.
- **Mount Fixture:** Align the mounting holes of the fixture (sign, enclosure, etc.) with the clamp's integrated bolt/stud.
- **Fasten Fixture:** Use the provided nut and washer(s) to secure the fixture onto the clamp's bolt/stud. Tighten firmly using appropriate wrenches.
- **Inspect:** Verify that the clamps are securely attached to the pole and the fixture is securely fastened to the clamp(s). Check stability before leaving the installation unattended.
- **Safety:** Always wear appropriate safety gloves (cut-resistant) and eye protection. Ensure installation complies with any local regulations and safety standards, especially for overhead items. Confirm load limits are not exceeded.

6. Specifications



| Code | Dimensions(mm) | | | | | | | Material |
|---------|----------------|------|----|-----|----|------|------|-----------|
| | L | W | H | T | A | B | C | |
| UCC7013 | 70 | 31.5 | 23 | 1.8 | 13 | 7.6 | 20.8 | SS201/304 |
| UCC7017 | 70 | 31.5 | 23 | 1.8 | 17 | 8.5 | 20.8 | SS201/304 |
| UCC7019 | 70 | 31.5 | 23 | 1.8 | 19 | 9.5 | 20.8 | SS201/304 |
| UCC7022 | 70 | 31.5 | 23 | 1.8 | 22 | 12.5 | 20.8 | SS201/304 |
| UCC7025 | 70 | 31.5 | 23 | 1.8 | 25 | 12.5 | 20.8 | SS201/304 |
| UCC7030 | 70 | 31.5 | 23 | 1.8 | 30 | 12.5 | 20.8 | SS201/304 |

7. Specifications



| Code | Dimensions(mm) | | | | | | | Material |
|---------|----------------|------|----|-----|----|------|------|-----------|
| | L | W | H | T | A | B | C | |
| UCC3013 | 30 | 31.5 | 23 | 1.8 | 13 | 7.6 | 20.8 | SS201/304 |
| UCC3017 | 30 | 31.5 | 23 | 1.8 | 17 | 8.5 | 20.8 | SS201/304 |
| UCC3019 | 30 | 31.5 | 23 | 1.8 | 19 | 9.5 | 20.8 | SS201/304 |
| UCC3022 | 30 | 31.5 | 23 | 1.8 | 22 | 12.5 | 20.8 | SS201/304 |
| UCC3025 | 30 | 31.5 | 23 | 1.8 | 25 | 12.5 | 20.8 | SS201/304 |
| UCC3030 | 30 | 31.5 | 23 | 1.8 | 30 | 12.5 | 20.8 | SS201/304 |

8. Associated Products

- **Stainless Steel Banding:** Required for installation. Width should match clamp slot compatibility (e.g., 3/4" recommended for heavy duty). Material grade (e.g., 201, 304) should suit the environment.
- **Banding Clips/Buckles:** Required to secure the banding (e.g., Wing Seals, Push Seals, Screw-Lock Buckles). Must match the banding width.
- **Banding Tensioning Tool:** Appropriate tool needed to tension the banding and install the chosen clip/buckle type.
- **Hammer:** Required if using Wing Seals or similar hammered clips.
- **Wrenches:** Standard wrenches/spanners needed to tighten the fixture mounting nut onto the clamp's bolt/stud.

Disclaimer: The information provided in this datasheet is intended as a general guide. Specific performance characteristics, especially load ratings, can vary significantly based on materials, installation quality, banding used, and application conditions. Users **MUST** consult the manufacturer's specific data and verify the product suitability and load capacity for their requirements. Manufacturer reserves the right to change specifications without notice.